

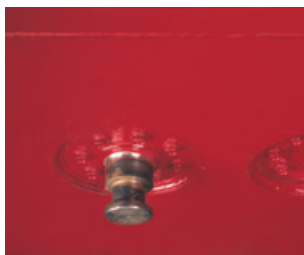
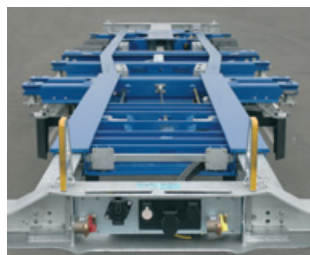
S.CF 24 G – 45' EURO III

**Optimal fittings
for your transports**



Trouble-free positioning –
the improved operation of
the rear prevents jamming
or tilting when setting the
container position.

**Robust and smooth
running –** spring mounted
mechanical front extension
with locking mechanism
for taking on 45' euro
containers.



Simpler setting down –
thanks to the guide, the
containers can be taken
on more accurately without
damage. The connections
are also protected.

**The use of a 3 axle tractor
unit –** is possible when the
king pin is located in the
front position. Only up to and
including 40' containers.

Technical specifications

Weight*	
Permissible/technical axle load	24,000/27,000 kg
Permissible/technical axle load	11,000/15,000 kg
Permissible/technical total weight	35,000/39,000 kg
Dead weight basis configuration	5,600 kg
Maximum 20' centre container weight	30,000 kg
Dimensions*	
Fifth wheel height, loaded	1,090 mm
Fifth wheel height, unloaded	1,065 mm
Low bed loading height, unloaded	1,075 mm / 1,100 mm
Crank height	120 mm
Body height at front frame neck incl. pick-up plate (throat height)	130 mm
Front beam with the front extension pushed out completely	2,040 mm
Wheelbase 2nd king pin position	7,850 mm
Wheelbase 1st king pin position (for three axle semi-trailer trucks)	8,150 mm
Front axle spacing	1,410 mm
Rear axle spacing	1,310 mm
* All dimensions and weights are approximate. The data relates to a basic vehicle and does not take into account any possible additional fittings! Issued: 27/08/08	



* sold S.CF in GJ 07/08

 **Container trailer chassis
S.CF 45' EURO**

2,041 Container trailer chassis*
**2,041 Good reasons
for all container sizes**

just more.



Schmitz Cargobull AG · Bahnhofstraße 22 · D-48612 Horstmar
Phone +49 2558 81-0 · Fax +49 2558 81-500
E-mail: info@cargobull.com · www.cargobull.com

S.CF-EURO-FLY-DEGB-1852-3708 Some illustrations with special fittings - We retain the right to make changes for further technical developments.



Universal chassis for sea containers

The Schmitz Cargobull trailer container chassis S.CF 45' EURO convinces through its safety and wide range of applications.

- Flexible use: The S.CF 45' EURO can carry all common 20' to 45' containers
- Time-saving loading: Front and rear extensions are light and easy to use.
- Resilient construction: 20' container in a central position with up to 30t total container weight.
- Robust container locking system: you profit from its suitability for daily use and its stability.
- Very high degree of transporting safety: using the disk-braked ROTOS® running gear with electronic braking system (EBS) and Roll-Stability-Program (RSP).
- Reliable automation: The MRH pneumatic suspension with AUTO-RESET function ensures for the automatic resetting of the running height.
- Standard: two pairs of ferry eyes are included.
- Easy to repair: the front and rear extensions are bolted and enable repairs to be carried out saving you time and money.



Top class technology for safe applications

The locks that have been proven in practice provide a fast as well as safe handling in daily use.

MULTI LOCK® – variable locking.

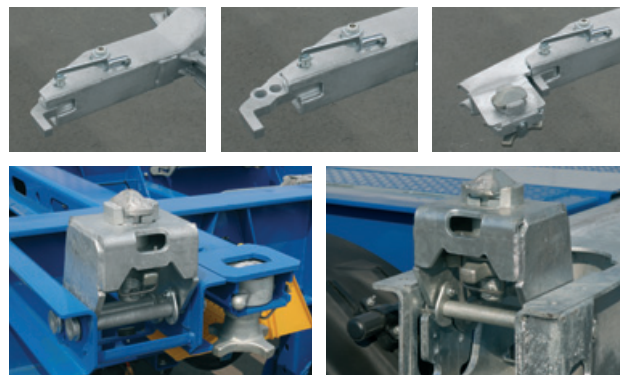
- Patented front container locking mechanism for multi-purpose applications. For taking on tunnel containers with sloping and straight edges as well as containers without a tunnel while holding the front beam.

KLAPP LOCK – stable and easy to use.

- Locking mechanism for taking on the front container with 2x20'. Lowerable for transporting tunnel containers.

STEP LOCK® – option for simple height adjustability.

- Locking mechanism on the rear extension for taking on containers with or without tunnel.



The correct position for all containers

